

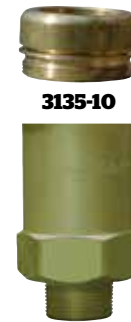
# External "Pop-Action" Pressure Relief Valves for ASME Containers and Bulk Plant Installations AA3126, AA3130, 3131, 3132, 3133, 3135, AA3135, and A3149 Series

## Application

Designed for use as a primary relief valve on ASME above ground and underground containers, bulk plant installations and skid tanks. The 3131 Series may also be used as a primary or secondary relief valve on DOT cylinders, or as a hydrostatic relief valve. All working components of these relief valves are outside the container connection, so the valves must be protected from physical damage.

## Features

- "Pop-action" design keeps product loss at a minimum.
- Relief valve designed to automatically reset firmly after discharge.
- Resilient seat disc provides "bubble-tight" seal.
- 3149 relief valves incorporate integral pipeway adapter with break off groove that protects the valve from piping stress damage.
- Optional pipeway adapters have grooves that will break off to protect the relief valve from damage should excess stress be applied to the piping.
- 3149 relief valves include weep hole deflectors, installed to guard against flame impingement on adjacent containers.
- Most are ASME rated for use with LP-Gas and anhydrous ammonia.



3135-10

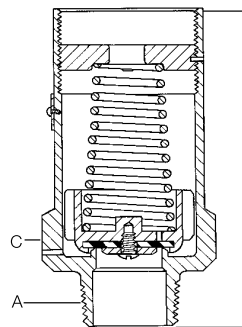


A3149

3135



3132-10



AA3135



W3132G

## Materials

Description	3131, 3132, 3133, 3135	AA3126 AA3130	AA3135	A3149
Body	Brass	Aluminum Rod*		Upper Cold Rolled Steel Lower Ductile Iron
Liner		None		Stainless Steel
Spring Guide	Brass	Aluminum		Stainless Steel
Spring	Corrosion Resistant Steel	Stainless Steel		Stainless Steel or Coated Steel
Seat Disc		Resilient Synthetic Rubber		



## Ordering Information

Part Number	Start To Discharge Setting PSIG	A Container Connection M. NPT	B Overall Height (Approx.)	C Wrench Hex Section	Flow Capacity SCFM/Air (a)			Accessories		
					UL (At 120% of Set Pressure)	ASME (At 120% of Set Pressure)	Protective Cap	Pipeway Adapter		Weep Hole Deflector
								Part Number	Outlet Size	
AA3126L030	30	1/2"	2 3/8"	7/8"	(b)	-	9103-54	AA3126-10	1/2" M. NPT	-
A3149L055	55	2 1/2"	10 1/2"	4 1/8"	2608 (c)	-	3149-40	(h)		Included (j)
A3149L200	200				8770 (c)	-				
AA3126L250	250	1/2"	2 3/8"	7/8"	277 (c)	-	9103-54	AA3126-10	1/2" M. NPT	3133-11
3131G		3/4"	3 7/16"	1 3/4"	2060	1939	3131-41 (g)	3131-10	1" F. NPT	
T3131G			3 23/25"		2045	1838	11557-110	AA3131-10	1" F. NPT	
AA3130UA250			3 7/16"		3340	-	3132-10	3132-10	1 1/4" F. NPT	
W3132G		1"	6 1/32"	2 3/8"	4130	-	3132-54 (g)	-	-	
3132G		3790			-	3132-10		1 1/4" F. NPT		
T3132G		3995			-	-		-		
MV3132G		5770			5345	3135-54 (g)		3135-10	2" F. NPT	
3135G		6430	6341	AA3135-40PR	AA3135-10					
AA3135UA250		1 1/2"	5 15/16"	3 3/8"	6080	-	3133-54 (g)	3133-10	-	
3133G	2 1/2"	10 1/2"	4 1/8"	10390	-	3149-40	(h)		Included (j)	
A3149MG				9153	-					
A3149G				-	-					
AA3130UA265	265	3/4"	3 7/16"	1 3/4"	2125	1912	11557-110	AA3131-10	1" F. NPT	-
AA3135UA265		1 1/4"	6 13/32"	2 11/16"	6703	6615	AA3135-40PR	AA3135-10	2" F. NPT	3133-11
AA3126L312	312	1/2"	2 3/8"	7/8"	330 (c)	-	9103-54	AA3126-10	1/2" M. NPT	-

(a) Flow rates shown are for bare relief valves. Adapters and pipeways will reduce flow as discussed in the Foreword section.  
 (b) Not UL or ASME rated. .059 square inch effective area.  
 (c) Not UL or ASME rated. RegO rated at 120% of set pressure.

(g) Cap supplied with chain.  
 (h) Outlet 3 1/2-8N (F) thread, will accept 3" M. NPT pipe thread.  
 (j) Weep hole deflector is Part No. A3134-11B.